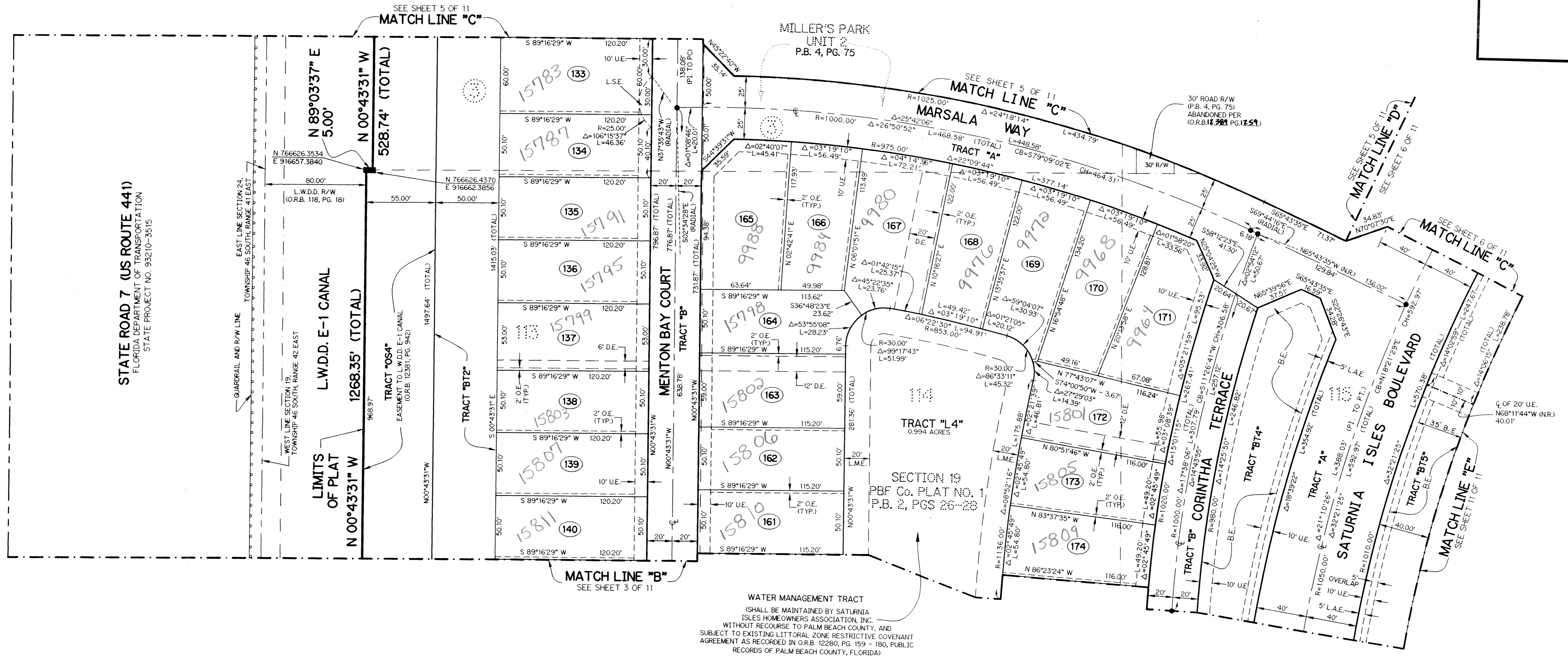


# SUSSMAN AGR - P.U.D. SATURNIA ISLES - PLAT ONE

111

BEING A REPLAT OF TRACTS 113 THROUGH 120 AND A PORTION OF TRACTS 105 THROUGH 108, SECTION 19, TOWNSHIP 46 SOUTH, RANGE 42 EAST AND A PORTION OF TRACTS 10 THROUGH 16, SECTION 30, TOWNSHIP 46 SOUTH, RANGE 42 EAST, PALM BEACH FARMS COMPANY PLAT NO. 1 AS RECORDED IN PLAT BOOK 2, PAGES 26 THROUGH 28 TOGETHER WITH BLOCKS 2 THROUGH 5 AND A PORTION OF BLOCKS 1 AND 6, MILLER'S PARK UNIT 2 AS RECORDED IN PLAT BOOK 4, PAGE 75 TOGETHER WITH ROAD RIGHT-OF-WAY ABANDONED PER OFFICIAL RECORD BOOK 12389, PAGE 1259 ALL OF THE PUBLIC RECORDS OF PALM BEACH COUNTY, FLORIDA, LYING IN SECTIONS 19 AND 30, TOWNSHIP 46 SOUTH, RANGE 42 EAST.

SHEET 4 OF 11 DECEMBER, 2000



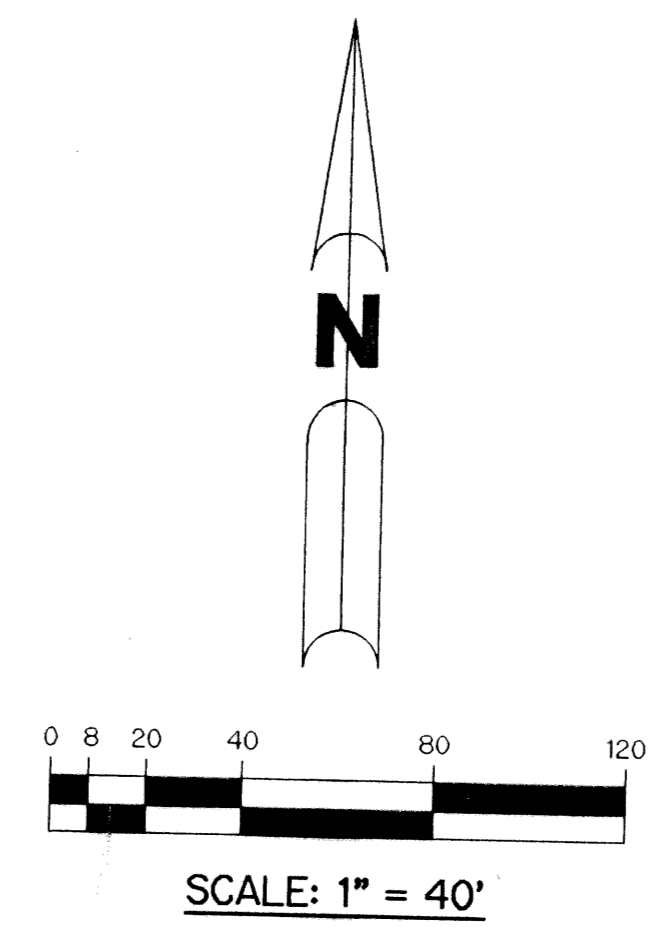
**LEGEND:**

- - SET PERMANENT REFERENCE MONUMENT, L.B. #6674
- - FOUND PERMANENT REFERENCE MONUMENT, L.B. #6674
- - SET PERMANENT CONTROL POINT, L.B. #6674
- - FOUND PERMANENT CONTROL POINT, L.B. #6674
- △ - DELTA ANGLE
- ABAND. - ABANDONED
- B.E. - BUFFER EASEMENT
- CB - CHORD BEARING
- CH - CHORD DISTANCE
- C - CENTERLINE
- D.B. - DEED BOOK
- D.E. - DRAINAGE EASEMENT
- L - ARC LENGTH
- L.A.E. - LIMITED ACCESS EASEMENT
- L.M.A.E. - LAKE MAINTENANCE ACCESS EASEMENT
- L.M.E. - LAKE MAINTENANCE EASEMENT
- L.S.E. - LANDSCAPE EASEMENT
- L.W.D.D. - LAKE WORTH DRAINAGE DISTRICT
- N.R. - NOT RADIAL
- N.T.S. - NOT TO SCALE
- O.E. - OVERHANG EASEMENT
- O.R.B. - OFFICIAL RECORD BOOK
- P.B. - PLAT BOOK
- P.S. - PAGES
- P.C.C. - POINT OF COMPOUND CURVATURE
- P.C. - POINT OF CURVATURE
- P.I. - POINT OF INTERSECTION
- P.T. - POINT OF TANGENCY
- P.S.M. - PROFESSIONAL SURVEYOR AND MAPPER
- R - RADIALS
- RAD. - RADIAL
- R/W - RIGHT-OF-WAY
- S.D.E. - SWALE DRAINAGE EASEMENT
- S.T. - SURVEY TIE
- (TYP.) - TYPICAL
- UE - UTILITY EASEMENT
- P.B.F.C. - PALM BEACH FARMS COMPANY PLAT NO. 1 (P.B. 2, PGS. 26 - 28)
- UE - UTILITY EASEMENT
- P.B.F.C. - PALM BEACH FARMS COMPANY PLAT NO. 1 (P.B. 2, PGS. 26 - 28)
- DENOTES STATE PLANE COORDINATES
- 114 - DENOTES TRACT NUMBER PER PALM BEACH FARMS COMPANY PLAT NO. 1
- 115 - DENOTES BLOCK NUMBER PER MILLER'S PARK UNIT 2 (P.B. 4, PG. 75)

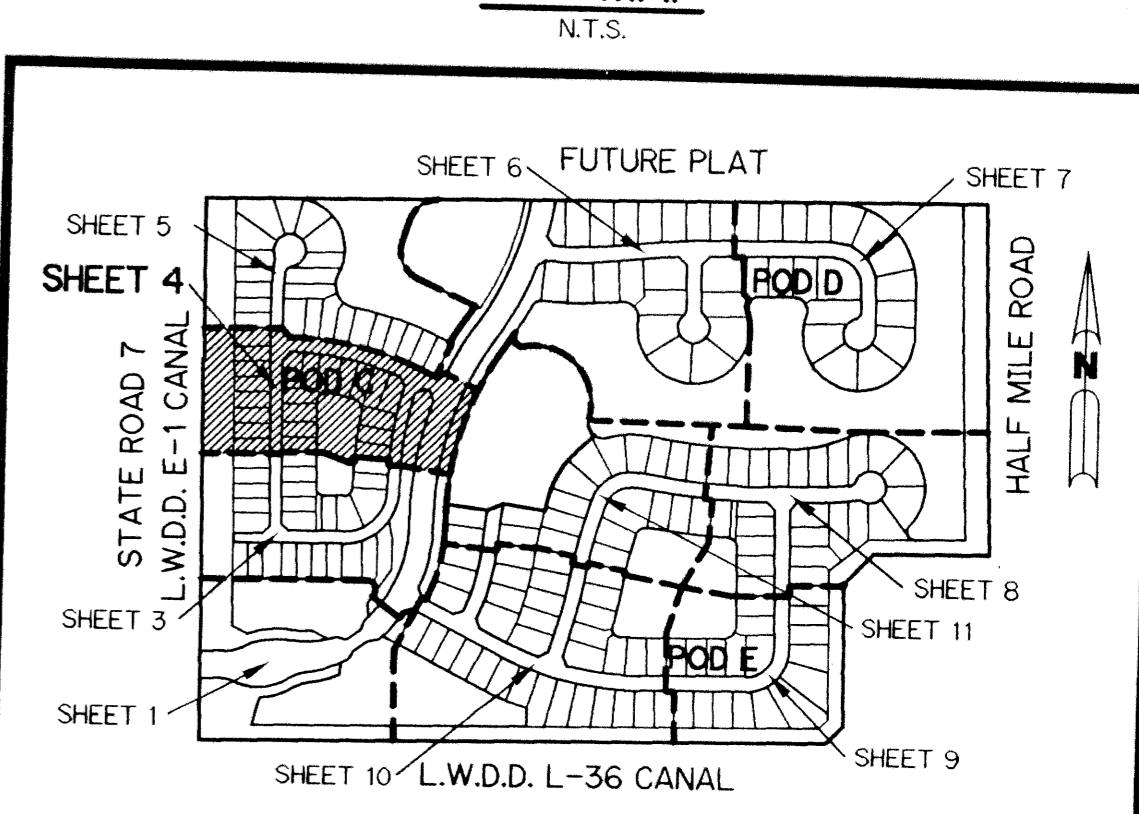
**NOTE:**

COORDINATES SHOWN ARE GRID COORDINATES  
 DATUM = NAD 83 (1998 ADJUSTMENT)  
 ZONE = FLORIDA EAST ZONE  
 LINEAR UNIT = U.S. SURVEY FEET  
 COORDINATE SYSTEM = 1983 STATE PLANE TRANSVERSE MERCATOR PROJECTION  
 ALL DISTANCES ARE GROUND UNLESS OTHERWISE NOTED  
 SCALE FACTOR = 1.0000190  
 PLAT BEARING = GRID BEARING  
 NO ROTATION

THIS INSTRUMENT PREPARED BY  
 PERRY C. WHITE, P.S.M. 4213, STATE OF FLORIDA  
 LAWSON, NOBLE AND WEBB, INC.  
 ENGINEERS PLANNERS SURVEYORS  
 420 COLUMBIA DRIVE  
 WEST PALM BEACH, FLORIDA 33409  
 LB-6674



**KEY MAP**



Saturnia Isles - Plat one  
 PERRY C. WHITE  
 4213  
 LAWSON, NOBLE AND WEBB, INC.  
 420 COLUMBIA DRIVE  
 WEST PALM BEACH, FLORIDA 33409  
 LB-6674